



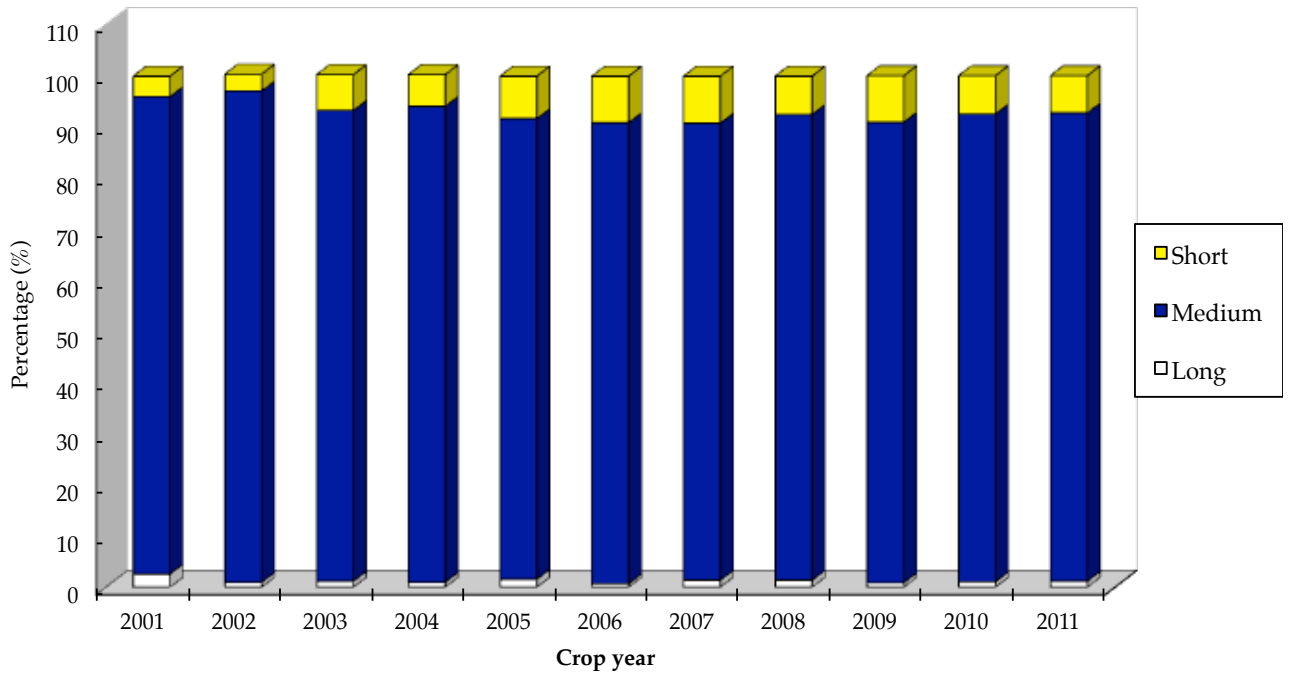
California Rice
STATISTICAL REPORT
(Updated September 17, 2013)

**California Rice Statistics
and related
National and International Data**

Table of Contents

Detail of Largest Rice Growing Counties in California	Inside front cover
California Rice Production by Type	1
U.S. Rice Production by Type	2
U.S. & California Rice Production	3
U.S. & California Paddy Rice Yields	4
California Rice Acreage Harvested	5
California Rice Acreage by Type	6
U.S. Rough & Milled Rice Total Disappearance	7
Total U.S. Rice Consumption	8
Conversion Information	9
References	10

California Rice Production By Type 2001- 2011

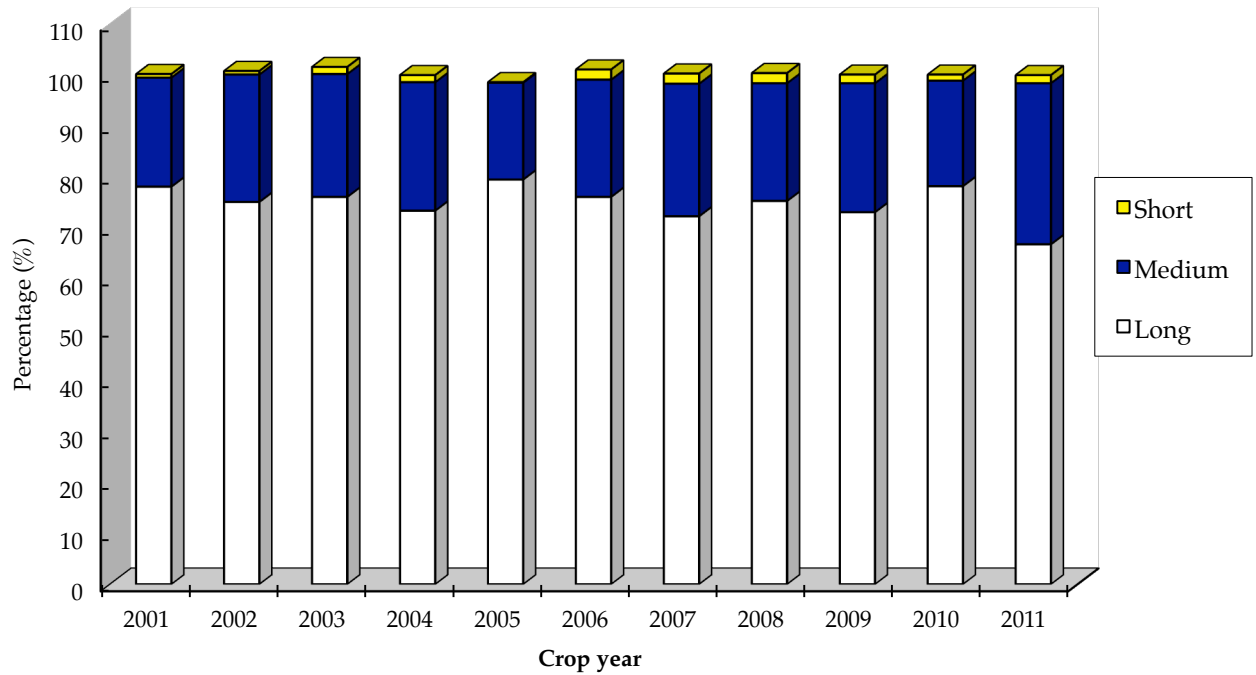


California Rice Production by Type, 2001 - 2011

Crop year	Short grain (%)	Medium grain (%)	Long grain (%)
2001	4.0	93.3	2.6
2002	3.3	96.0	1.0
2003	7.0	92.0	1.2
2004	6.2	93.0	1.0
2005	8.3	90.0	1.6
2006	9.1	90.1	0.7
2007	9.2	89.3	1.4
2008	7.5	91.0	1.4
2009	9.1	90.0	1.9
2010	7.5	91.6	.9
2011	7.4	91.5	1.1

Sources: Appendix Table 8 2010/11 Rice Yearbook, April 2012, Economic Research Service, USDA.

U.S. Rice Production By Type 2001 - 2011

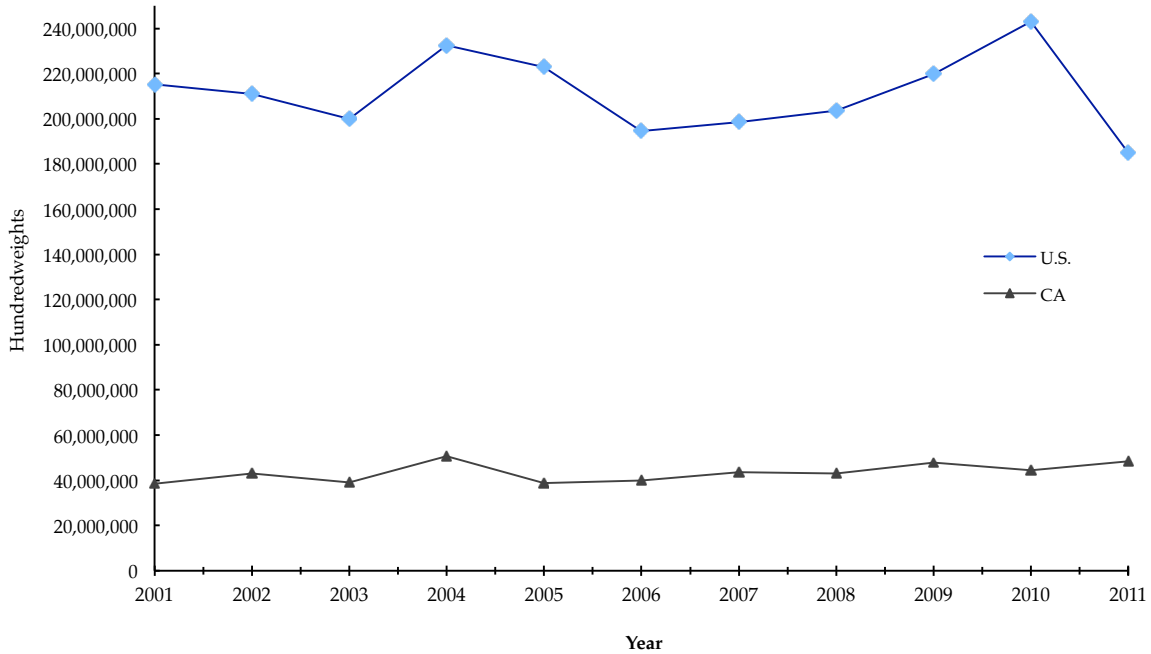


U.S. Rice Production by Type, 2001 - 2011

Crop year	Short grain (%)	Medium grain (%)	Long grain (%)
2001	0.7	21.4	78.0
2002	0.7	25.0	75.0
2003	1.3	24.1	76.0
2004	1.4	25.2	73.3
2005	0.1	19.0	79.4
2006	2.0	23.0	76.0
2007	2.0	26.0	72.2
2008	1.6	23.2	75.2
2009	1.7	25.3	73.0
2010	1.2	20.7	78.1
2011	1.7	31.6	66.7

Sources: Appendix Table 8 2010/11 Rice Yearbook, April 2012, Economic Research Service, USDA.

**U.S. & California Rice Production
2001 - 2011**

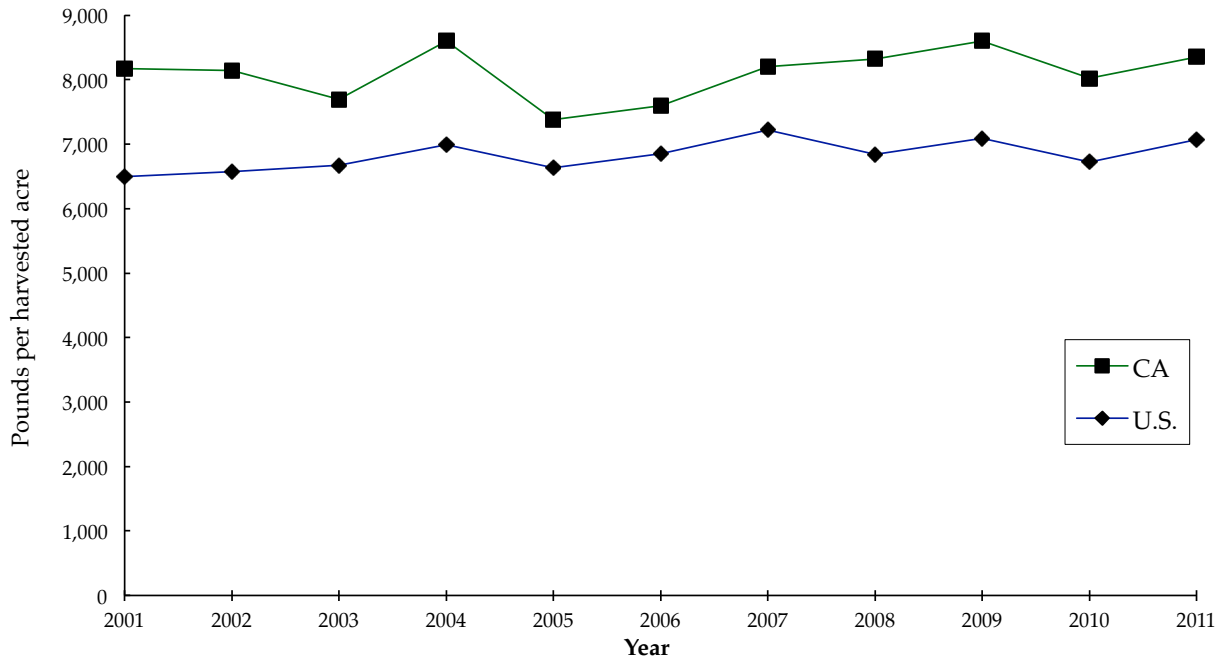


U.S. & California Rice Production, 2001 - 2011

Year	U.S.		California	
	<u>Hundredweights</u>	<u>Metric Tons</u>	<u>Hundredweights</u>	<u>Metric Tons</u>
2001	215,270,000	9,764,432	38,490,000	1,745,868
2002	210,960,000	9,568,935	42,989,000	1,949,938
2003	199,897,000	9,067,128	39,036,000	1,770,634
2004	232,362,000	10,539,708	50,759,000	2,304,010
2005	222,833,000	10,107,482	38,836,000	1,761,562
2006	194,585,000	8,826,181	40,040,000	1,816,174
2007	198,388,000	8,998,681	43,684,000	1,981,463
2008	203,733,000	9,241,125	43,030,000	1,951,798
2009	219,580,000	9,981,190	47,804,000	2,170,302
2010	243,104,000	11,036,921	44,326,000	2,012,400
2011	185,009,000	8,399,409	48,402,000	2,179,383

Sources: Appendix Table 7 2010/11 Rice Yearbook, April 2012, Economic Research Service, USDA.

U.S. & California Paddy Rice Yields 2001 - 2011

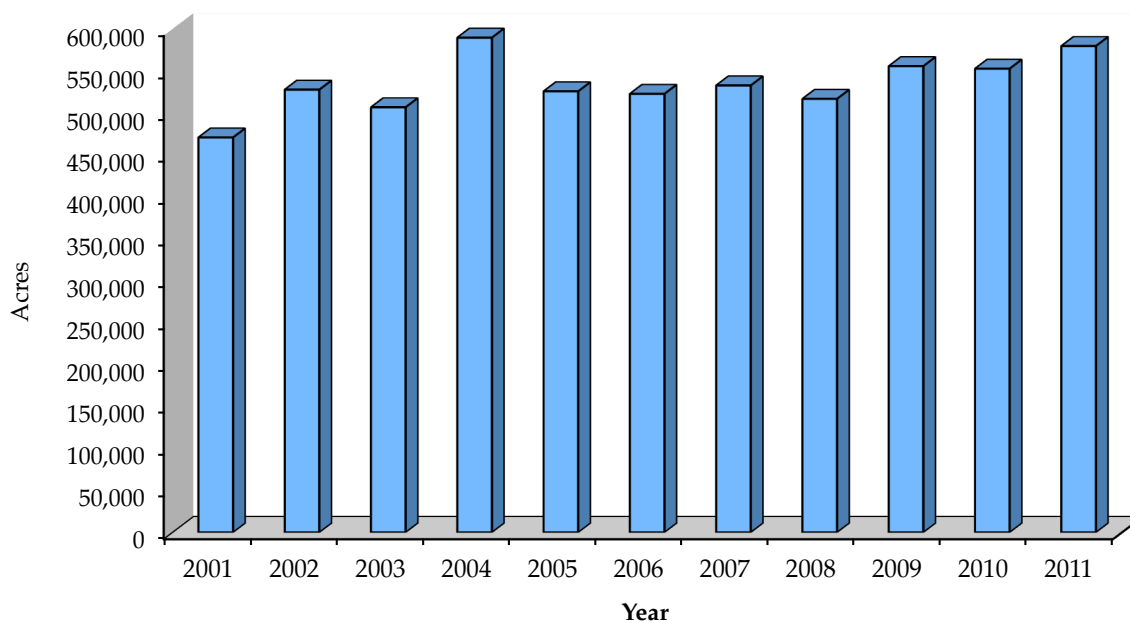


U.S. & California Paddy Rice Yields, 2001 - 2011

Year	U.S.		California	
	Pounds per acre	Kilograms per hectare	Pounds per acre	Kilograms per hectare
2001	6,496	7,282	8,170	9,159
2002	6,578	7,374	8,140	9,125
2003	6,670	7,477	7,700	8,632
2004	6,988	7,834	8,600	9,641
2005	6,636	7,439	7,380	8,273
2006	6,847	7,675	7,600	8,520
2007	7,219	8,092	8,200	9,192
2008	6,846	7,674	8,320	9,327
2009	7,085	7,933	8,600	9,630
2010	6,725	7,530	8,020	8,980
2011	7,067	7,913	8,350	9,350

Source: Appendix Table 10 2010/11 Rice Yearbook, April 2012, Economic Research Service, USDA.

California Rice Acreage Harvested 2001 - 2011

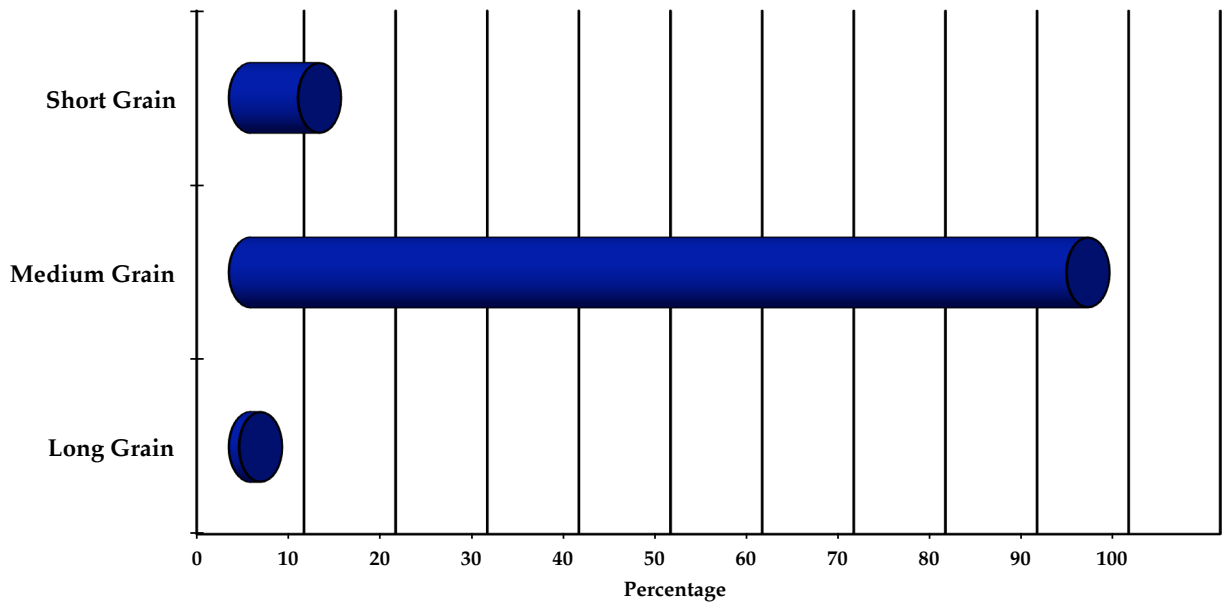


California Rice Acreage Harvested, 2001 - 2011

Year	Acres	Hectares
2001	471,000	190,755
2002	528,000	213,840
2003	507,000	205,335
2004	590,000	238,950
2005	526,000	213,030
2006	523,000	211,815
2007	533,000	215,865
2008	517,000	209,385
2009	556,000	225,192
2010	553,000	250,794
2011	580,000	263,039

Sources: Appendix Table 7 2010/11 Rice Yearbook, April 2012, Economic Research Service, USDA.

California Rice Acreage by Type 2013

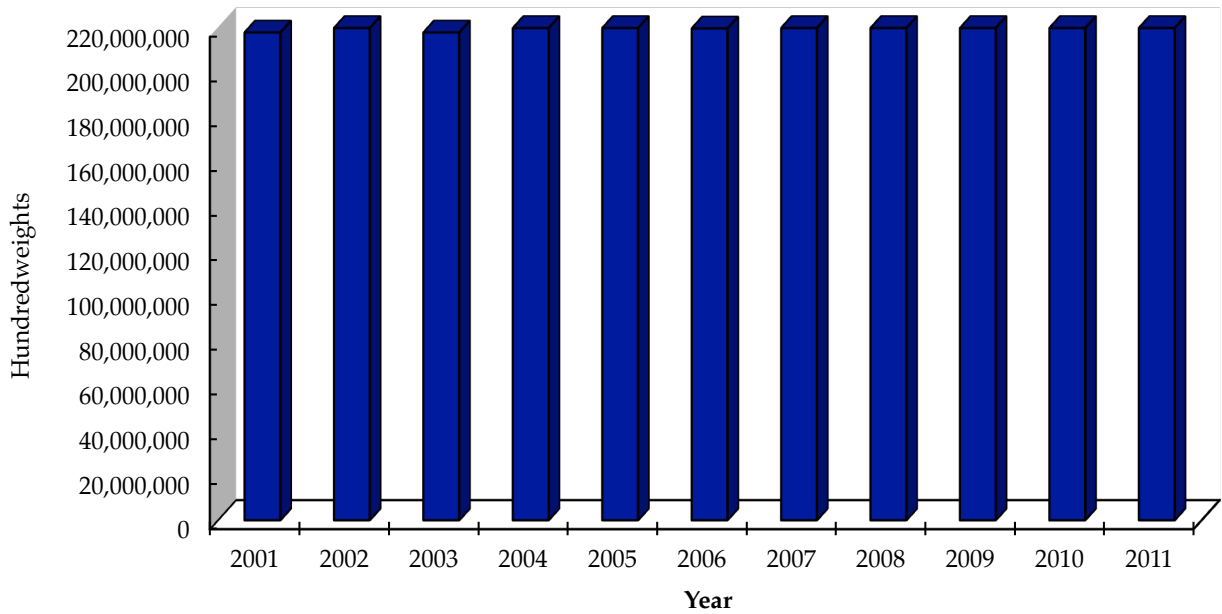


Acreage by Type 2013

Type	Acres	Hectares	Percentage
Short Grain	45,000	18,226	8.06 %
Medium Grain	510,000	206,561	91.4 %
Long Grain	6,000	2,340	1.1 %
Total	558,000	227,127	100

Source: United States Department of Agriculture, National Agriculture Statistics Service, Quick Stats by State

**U.S. Rough & Milled Rice Total Disappearance
(Domestic Use, Exports and Residual)
2001 - 2011**



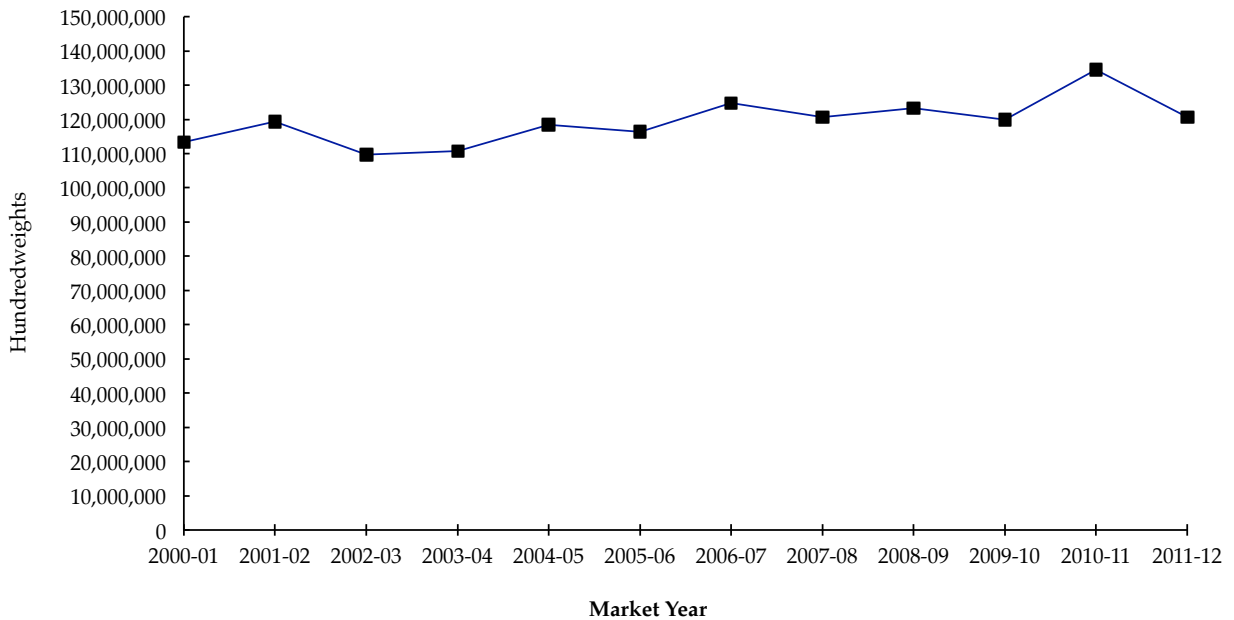
**U.S. Rough & Milled Rice Total Usage
Domestic & Export 2001 - 2011**

Year*	Hundredweights	Metric Tons
2001	218,000,000	9,888,262
2002	238,000,000	10,205,775
2003	218,000,000	9,888,262
2004	231,500,000	10,500,609
2005	234,700,000	10,645,757
2006	218,800,000	9,924,549
2007	232,200,000	10,532,360
2008	225,000,000	10,205,775
2009	222,000,000	10,068,020
2010	232,000,000	10,521,540
2011	249,000,000	11,292,517

*Year beginning August 1.

Source: Appendix Table 2 2010/11 Rice Yearbook, April 2012, Economic Research Service, USDA.
Includes imports.

**Total U.S. Rice Consumption
2001 - 2011**



Total U.S. Rice Consumption,* 2001 - 2011

Market Year	Hundredweights	Metric Tons
2000-01	113,400,000	5,143,711
2001-02	119,300,000	5,411,329
2002-03	109,700,000	4,975,882
2003-04	110,800,000	5,025,777
2004-05	118,500,000	5,375,042
2005-06	116,400,000	5,279,788
2006-07	124,700,000	5,656,267
2007-08	120,600,000	5,470,295
2008-09	123,300,000	5,592,765
2009-10	120,000,000	5,448,000
2010-11	134,500,000	6,106,300
2011-12**	120,610,000	5,475,694

*Includes imports and residual

** Projected

Note: Residual is the sum of unreported use, processing losses and estimating errors.

Source: Appendix Table 2 (Domestic Use) 2010/11 Rice Yearbook, April 2012, Economic Research Service, USDA.

Conversion Information

1 pound = 0.454 kilogram

1 hundredweight = 100 pounds = 45.359 kilograms = 0.0454 metric tons

1 acre = 0.405 hectare

1 kilogram = 2.205 pounds

1 metric ton = 1,000 kilograms = 22.05 hundredweights = 2,205 pounds

1 hectare = 2.469 acres

References

Publications

United States Department of Agriculture, National Agricultural Statistics Service,
Quick Stats

United States Department of Agriculture. Commodity Economics Division. Economic
Research Service.

----- 20011/12 *Rice Yearbook*, April 2012. RCS-2012.

Organizations

California Department of Food and Agriculture
1220 N Street, Sacramento, California 95814
Tel: 916/654-0466

Economic Research Service-National Agricultural Statistics Service (ERS-NASS)
United States Department of Agriculture
341 Victory Drive, Herndon, Virginia 22070
Tel: 800/999-6779 Fax: 703/834-0110 (for publication information)

International Rice Research Institute (IRRI)
P.O. Box 933, 1099 Manila, Philippines
Tel: 63/2/818-1926 or 63/2/812-7686 Fax: 63/2/818-2087

Rice Experiment Station
P.O. Box 306, Biggs, CA 95917
Tel: 530/868-5481 Fax: 916/868-1730

USA Rice Federation
2101 Wilson Boulevard, Suite 610, Arlington, VA 22201
Tel: 703/236-2300 Fax: 703/236-2301

PREPARED BY:
CALIFORNIA RICE COMMISSION (CRC)
1231 I STREET, SUITE 205
SACRAMENTO, CALIFORNIA 95814
Telephone (916) 387-2264 • Fax (916) 387-2265